

# SPEC SHEET + MEASUREMENTS



## Champion® Powerblend® Full-Zip Hoodie. S800

### Product photo



- 9-ounce, 50/50 cotton/poly
- 50/40/10 cotton/poly/black poly (Light Steel)
- Double Dry technology wicks moisture
- Two-ply hood with dyed-to-match drawcords
- Covered placket
- 1x1 rib knit sleeve cuffs and hem
- Front pouch pocket
- Embroidered Champion “C” logo at left cuff
- Woven back neck label

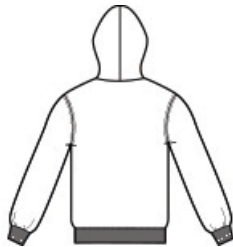
### CARE INSTRUCTIONS

Machine wash cold with like colors. Do not bleach. Tumble dry low. Cool iron if necessary.

### Sketches



front



back

# SPEC SHEET + MEASUREMENTS



## Champion® Powerblend® Full-Zip Hoodie. S800

### PRODUCT MEASUREMENTS

	S	M	L	XL	2XL	3XL
Body Length at Back	27	28	29	30	31	32
Chest	21	23	25	27	29	31
Set in Sleeve Length	36	36 3/4	37 1/2	38 1/4	39	39 3/8

**Body Length at Back:** Measured from high point shoulder to finished hem at back.

**Chest:** Measured across the chest one inch below armhole when laid flat.

**Set in Sleeve Length:** Measure from Center Back neck to shoulder point to sleeve hem.

### SIZE CHARTS

	S	M	L	XL	2XL	3XL
Chest	34-36	38-40	42-44	46-48	50-52	54-56

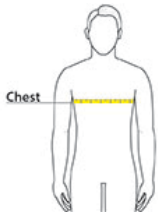
# SPEC SHEET + MEASUREMENTS



Champion® Powerblend® Full-Zip Hoodie. S800

## HOW TO MEASURE

---



**CHEST**  
Measure under the arm and around the fullest part of the chest with arms down, keeping tape horizontal.

## COLORS

---



Black  
PMS BLACK  
6C



Charcoal  
Heather



Light Steel



Navy  
PMS 2767C

SilverGrey